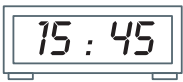
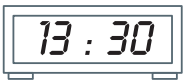
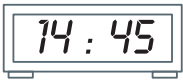
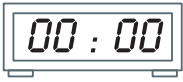
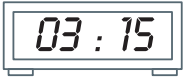


ZAMAN ÖLÇÜLERİ

● Aşağıdaki saatlerle gösterdikleri zamanları eşleştiriniz.



● Aşağıda okunuşu verilen zamanları saat yüzüne çiziniz.

Saat on yedi on beş



Saat yirmi üç



Saat yirmi bir kırk beş



Saat altıya çeyrek var



Saat bir buçuk



Saat ikiyi çeyrek geçiyor



Saat on ikiye çeyrek var



Saat on dokuz



● Aşağıdaki saatlerin "öğleden önce" ve "öğleden sonra" kaçı gösterdiklerini yazınız.



Öğleden Önce

Öğleden Sonra



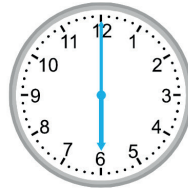
Öğleden Önce

Öğleden Sonra



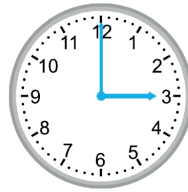
Öğleden Önce

Öğleden Sonra



Öğleden Önce

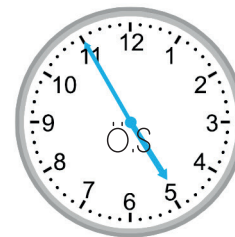
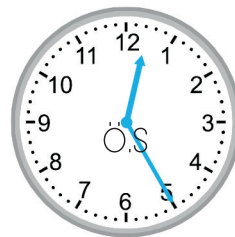
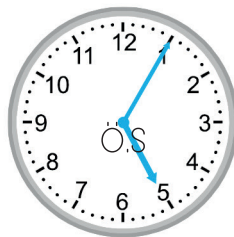
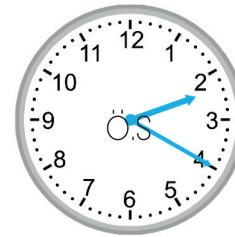
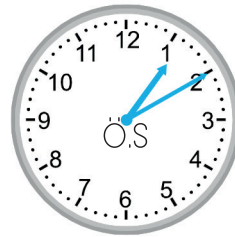
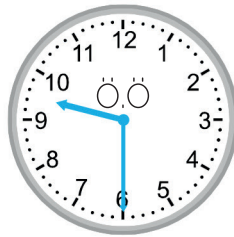
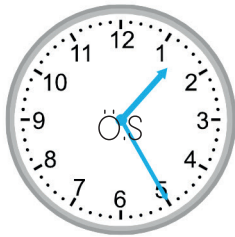
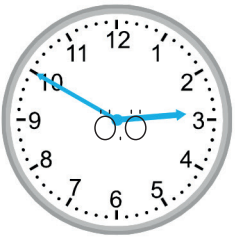
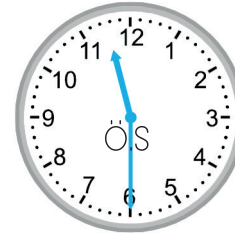
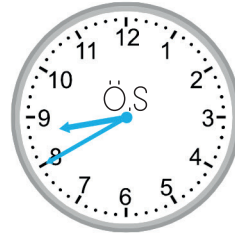
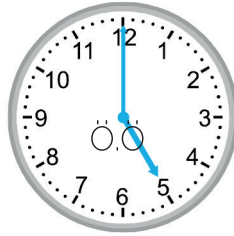
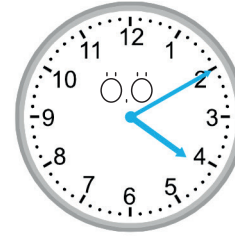
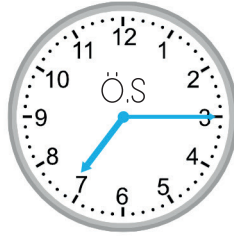
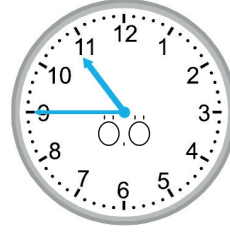
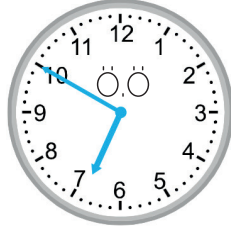
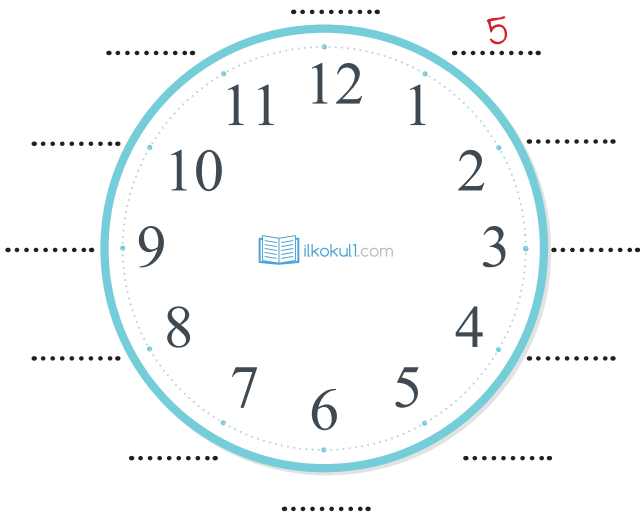
Öğleden Sonra



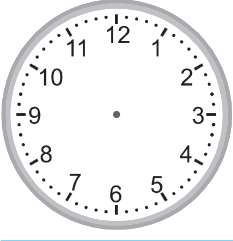
Öğleden Önce

Öğleden Sonra

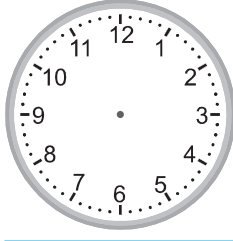
● Aşağıdaki saatlerin üzerine dakika bilgilerini örnekteki gibi yazınız. Ardından saatlerin okunuşlarını yazınız. "Ö.S" öğleden sonra, "Ö.Ö" öğleden önce anlamına gelmektedir.



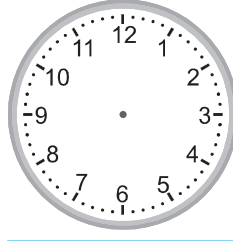
● Aşağıda okunuşları verilen saatlere göre saatlerin akrep ve yelkovanını çiziniz.



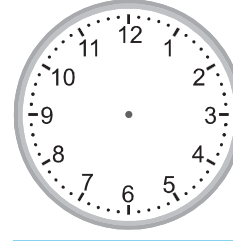
23:00



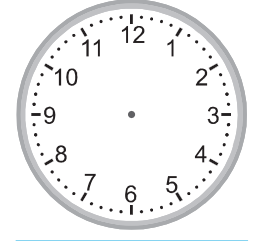
23:05



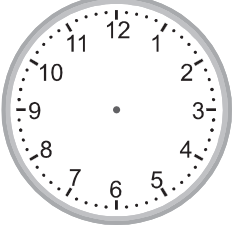
03:30



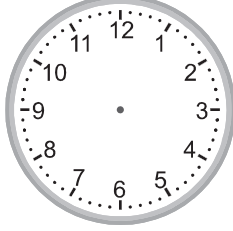
08:20



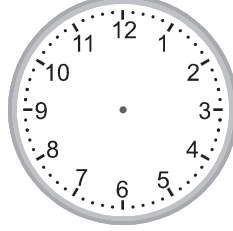
12:10



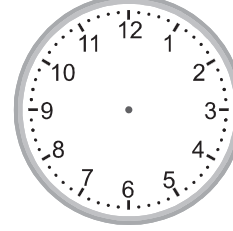
18:55



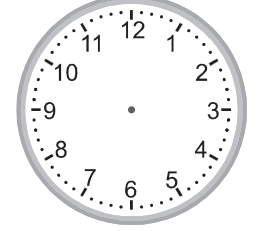
21:55



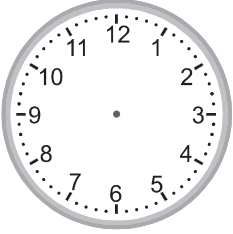
13:40



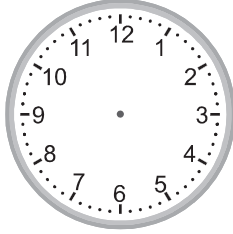
10:05



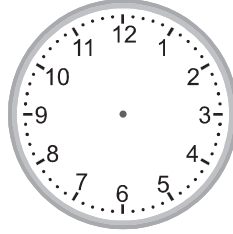
00:45



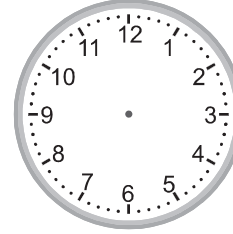
06:00



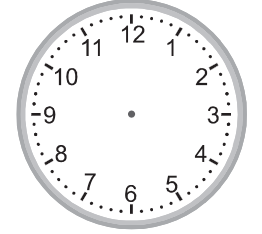
17:55



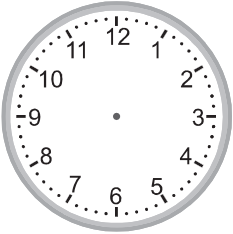
16:05



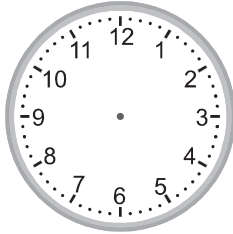
01:00



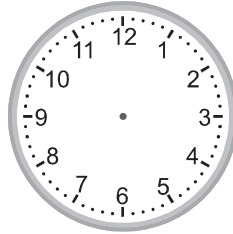
05:10



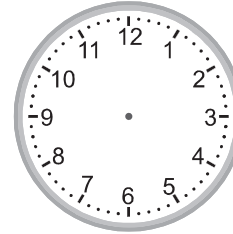
02:50



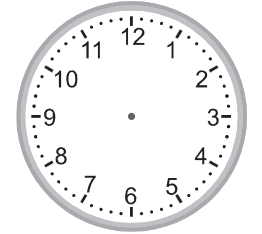
01:55



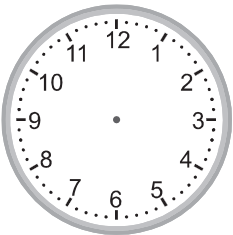
10:20



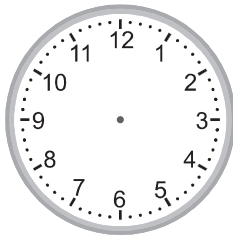
07:10



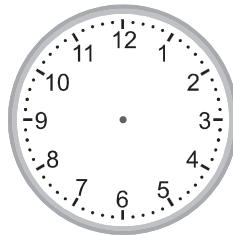
23:30



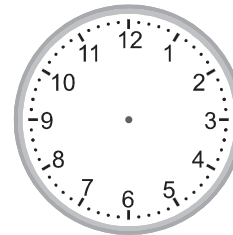
17:30



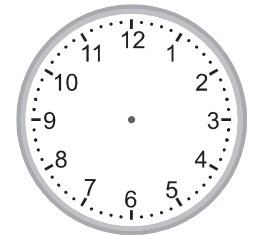
07:35



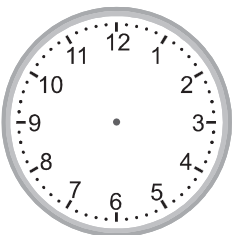
06:30



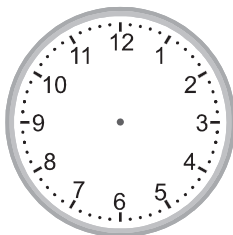
20:20



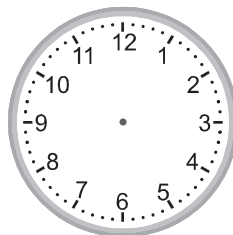
13:05



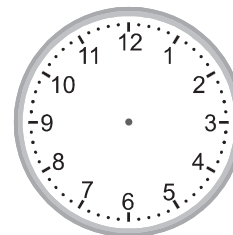
20:00



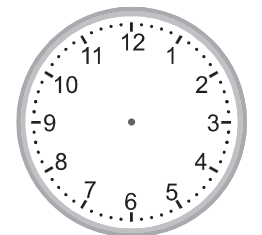
16:25



17:00



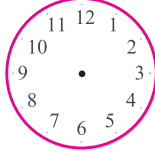
12:35



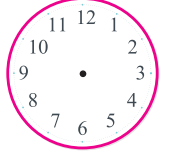
12:30

● Aşağıda okunuşu verilen zamanları saat yüzeyine çizerek gösteriniz.

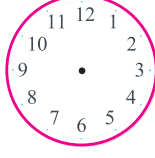
Saat yediyi yirmi geçiyor



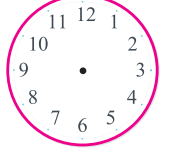
Saat on biri on geçiyor



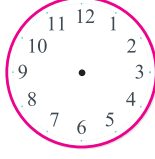
Saat dokuzu beş geçiyor



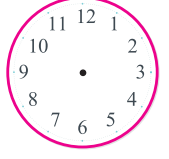
Saat yediyi çeyrek geçiyor



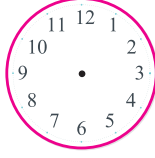
Saat ona on var



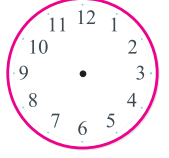
Saat on ikiye çeyrek var



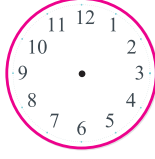
Saat on ikiye yirmi var



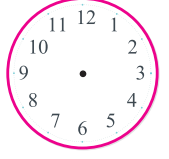
Saat on bire beş var



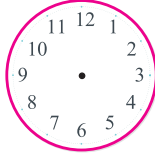
Saat beşi yirmi beş geçiyor



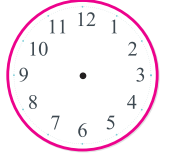
Saat dördü on geçiyor



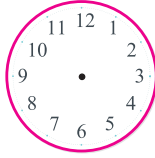
Saat bire beş var



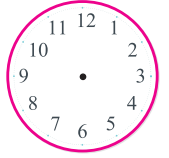
Saat üçü yirmi beş geçiyor



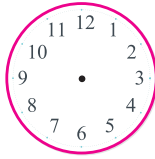
Saat sekize yirmi beş var



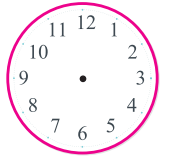
Saat bire çeyrek var



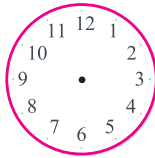
Saat altıyı on geçiyor



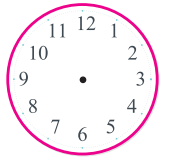
Saat ikiyi yirmi geçiyor



Saat beşe beş var

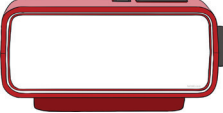
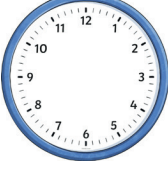

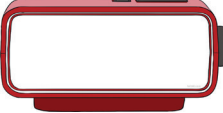
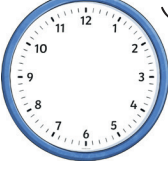
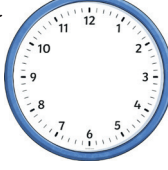
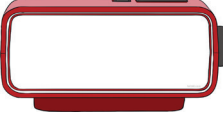
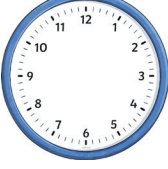

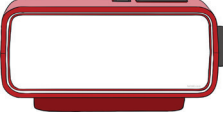
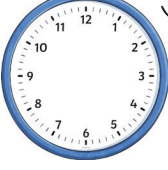
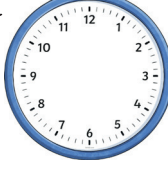
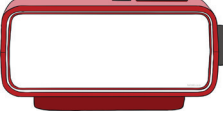
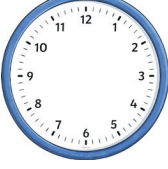

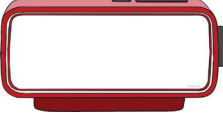


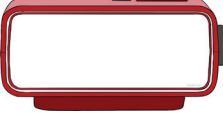
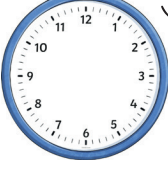
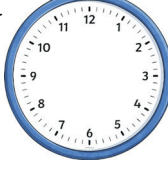
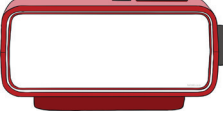


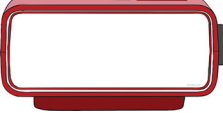




Saat on iki buçuk



ÖYLE BİR GEÇER ZAMAN KI

● Aşağıda okunuşu verilen zamanları önce dijital saatin üzerine yazınız. Sonrasında analog saatin üzerine çiziniz. Bu zamanın istenilen kadar öncesini veya sonrasını ikinci saatin üzerine çiziniz.

Saat dokuz a on var	→		→		15 dk. sonra	
Saat sekizi beş geçiyor	→		→		Yarım saat önce	
Saat yirmi bir otuz beş	→		→		20 dk. sonra	
Saat on ikiyi yirmi geçiyor	→		→		Yarım saat sonra	
Saat onu yirmi beş geçiyor	→		→		5 dk. sonra	
Saat on altı on	→		→		15 dk. önce	
Saat bir buçuk	→		→		Yarım saat önce	
Saat yediye beş var	→		→		20 dk. önce	
Saat on dört	→		→		1 saat sonra	

- Tabloda verilen saatlerden önce ve sonra istenilen zamanları dikkatlice yazınız.

Zaman	5 dk. önce	10 dk. sonra	20 dk. önce	25 dk. sonra	Yarım saat önce
					
					
					
					
					

- Aşağıdaki soruları yanıtlayınız.

1. Saatin üzerindeki uzun kolun adı nedir?
2. Saatin üzerindeki kısa kolun adı nedir?
3. Bir saat kaç dakikadır?
4. Yarım saat kaç dakikadır?
5. Saat bir buçukta yelkovan hangi sayıyı gösterir?
6. Saat yedi buçukta akrep hangi iki sayının arasını gösterir?
7. Saat beşe çeyrek kala yelkovan hangi sayıyı gösterir?
8. Saat altıyı yirmi geçe akrep hangi iki sayının arasını gösterir?
9. Bir gün kaç saattir?
10. Bir günün yarısı kaç saattir?
11. Bir günün çeyreği kaç saattir?
12. Bir günün $\frac{1}{5}$ 'i kaç saattir?
13. Bir hafta kaç saattir?
14. Akrep bir birim ilerlediğinde ne kadar süre geçmiş olur?

● Aşağıdaki zamanları saat ve dakika cinsinden örnekteki gibi yazınız.

1

75 dakika

60 dk + 15 dk = 1 s 15 dk

2

100 dakika

..... dk + dk = s dk

3

110 dakika

..... dk + dk = s dk

4

80 dakika

..... dk + dk = s dk

5

65 dakika

..... dk + dk = s dk

6

73 dakika

..... dk + dk = s dk

7

66 dakika

..... dk + dk = s dk

8

99 dakika

..... dk + dk = s dk

● Aşağıda verilen dakikalara, saat ve dakika cinsinden yazınız.

1. 3 saat 15 dakika = dk

2. 1 saat 30 dakika = dk

3. 6 saat 17 dakika = dk

4. 3 saat 3 dakika = dk

5. 2 saat 15 dakika = dk

6. 9 saat 45 dakika = dk

7. 4 saat 12 dakika = dk

8. 8 saat 8 dakika = dk

9. 4 saat 23 dakika = dk

10. 3 saat 18 dakika = dk

11. 7 saat 24 dakika = dk

12. 2 saat 12 dakika = dk

13. 4 saat 5 dakika = dk

14. 9 saat 13 dakika = dk

15. 10 saat 8 dakika = dk

16. 2 saat 13 dakika = dk

17. 1 saat 15 dakika = dk

18. 6 saat 25 dakika = dk

19. 4 saat 33 dakika = dk

20. 7 saat 29 dakika = dk

21. 7 saat 22 dakika = dk

22. 5 saat 5 dakika = dk