

# MADDENİN HÂLLERİ

● Görsellerdeki maddeleri inceleyiniz. Maddelerin altlarına "katı, sıvı , gaz" sözcüklerinden uygun olanları yazınız.



Toz Şeker



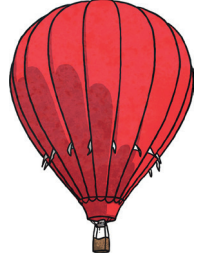
Limonata



Bardak



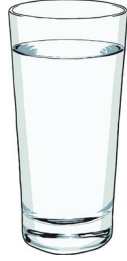
Bitki Çayı



Sıcak Hava



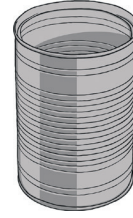
Bulutlar



Su



Taş



Konserve Kutusu



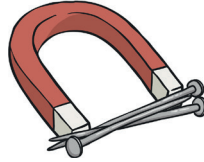
Kum



Çorba



Krema



Mıknatıs



Oksijen



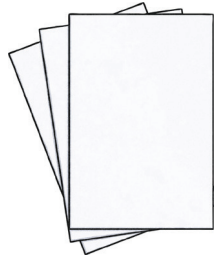
İp



Meyve Suyu



Tahta



Kağıt



Buhar



Buz